

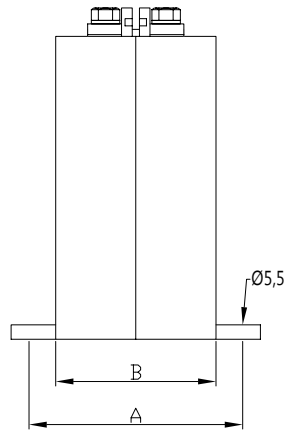
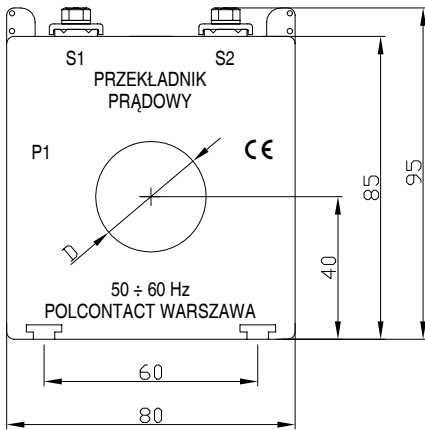
ELA 1

Quick magnetic saturation CT

Low voltage current transformer type ELA 1

Quick magnetic saturation current transformers (FS2). Inside diameters $\varnothing 22$, $\varnothing 31$ or $\varnothing 41$ mm.

Max voltage $U_m = 1.2$ kV. Test voltage $U_p = 6$ kV.



A = 60 mm; B = 45 mm
A = 80 mm; B = 65 mm

ELA 1				
	D 22	D 31	D 41	B
I_{pn}	cl. 3	cl. 3	cl. 3	
A	VA	VA	VA	mm
50	4			45
	7,5			65
75	7,5	4		45
	10			65
100	7,5	4		45
	10	7,5		45
	15			65
150	10	4	5	45
	15	10	7,5	45
	20	15	10	65
200	15	10	4	45
	20	20	10	45
	30	25	15	65
300	20	20	4	45
	30	30	15	45
	40	40	20	65
400			4	45
			20	45
			30	65
500			4	45
			20	45
600			4	45
			20	45

Rated secondary current $I_{sn} = 5$ A or 1 A, FS2
Other parameters available on request after consultation with our Technical Department

Example of order:
Current transformer ELA 1 D 31; 300/5; 20 VA;
class 3; FS2
Bus TS 35 available on request